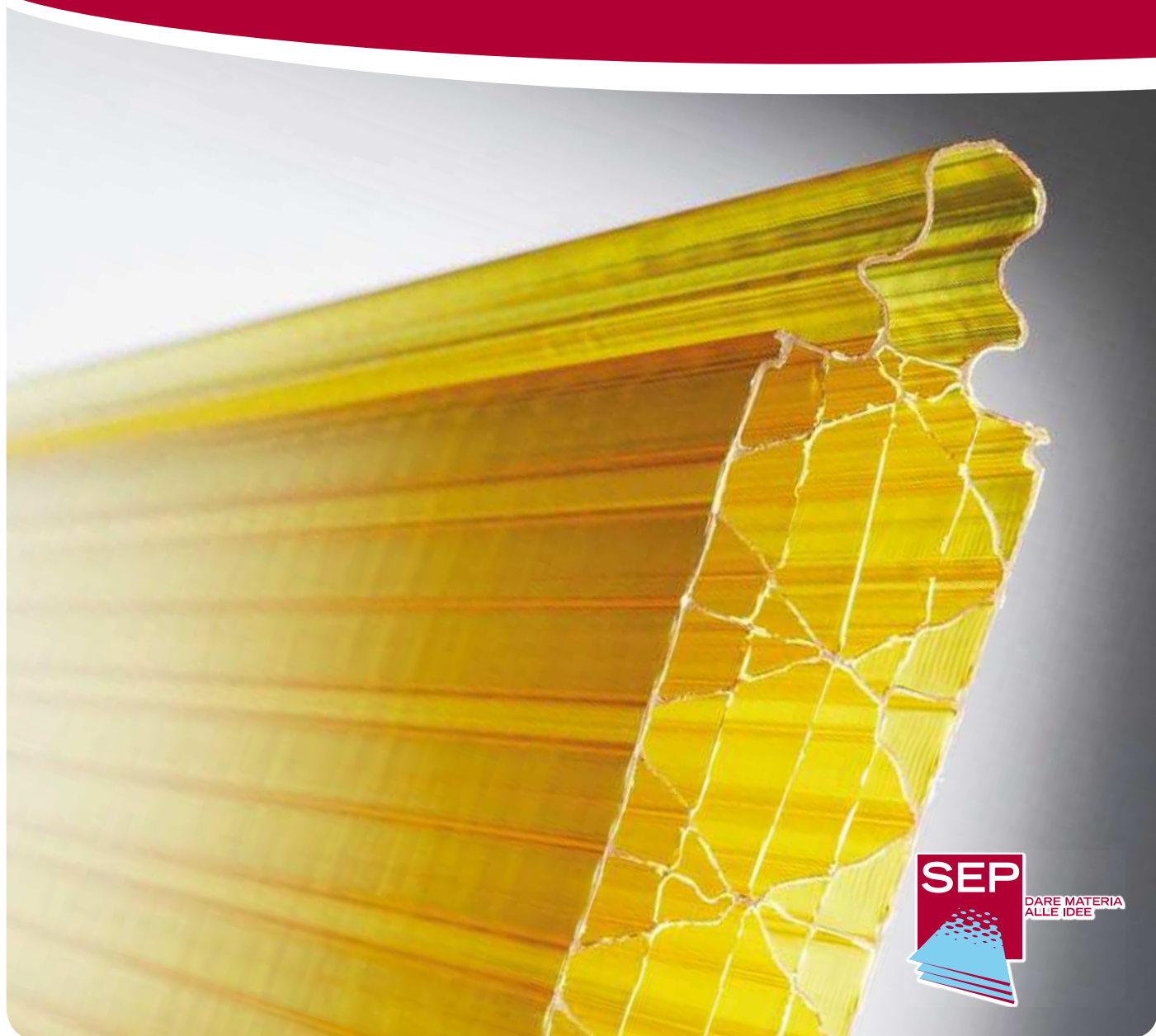


THE POLYCARBONATE PANEL SEPLUX
TECHNICAL DATA

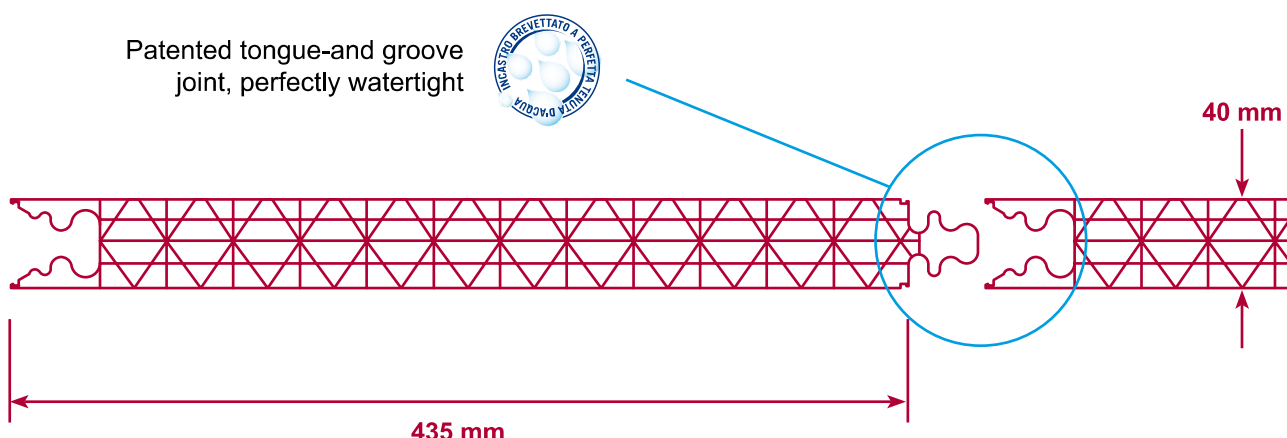


TECHNICAL CHARACTERISTICS



Multiwall triple-wall panel in co-extruded polycarbonate, UV-protected on one side, with 10 YEARS GUARANTEE against aging. The patented male-female interlock joint ensures perfect water-tightness without needing any sealants. Their insulation and weather resistant characteristics ensure that SepLux panels are the ideal solution for walling, roofs, sheds, louvers, continuous windows and both indoor

and outdoor partitions. The combined use of SepLux 40 5PX panels together with their special stainless steel hooks ensures suitability to both traditional and bespoke designs in size and architectural style, without the need to modify or alter the panels avoiding any drilling, cutting or sealing that would compromise their technical characteristics.



TECHNICAL DATA

Panel Section	40 mm 5 walls X
Width	435 mm
Length	maximum transportable
Weight	kg/m ² 4,00
Light Transmission	54,4%
Thermal Insulation	U = 1,2 w/(m ² k)
Minimum Bending Radius	200 times the thickness (r = 8000 mm)
Linear Expansion	0,065 mm/m °C
Service Temperature	- 40° + 120° °C
Fire Resistance	self extinguishing B S1,d0
Load Resistance	kg. 120
Sound insulation	17 dB
Available Colours	transparent - opal – smoke - blue - green
Avis technique	(n° 2/05-1183)
certification UNI	EN 14351-1 - Direttiva 89/106/CEE(CPD) EN 13830 - Direttiva 89/106/CEE(CPD)

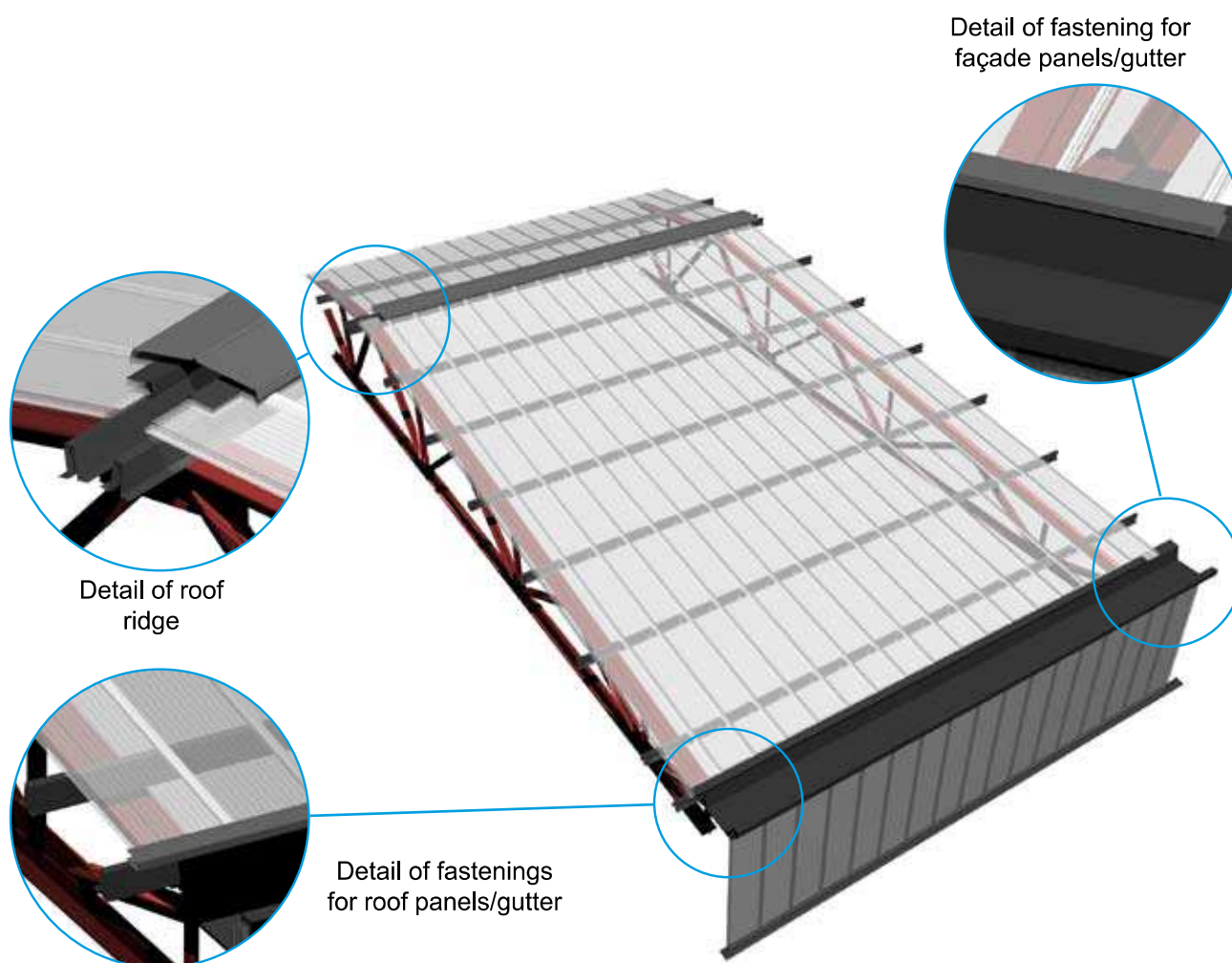


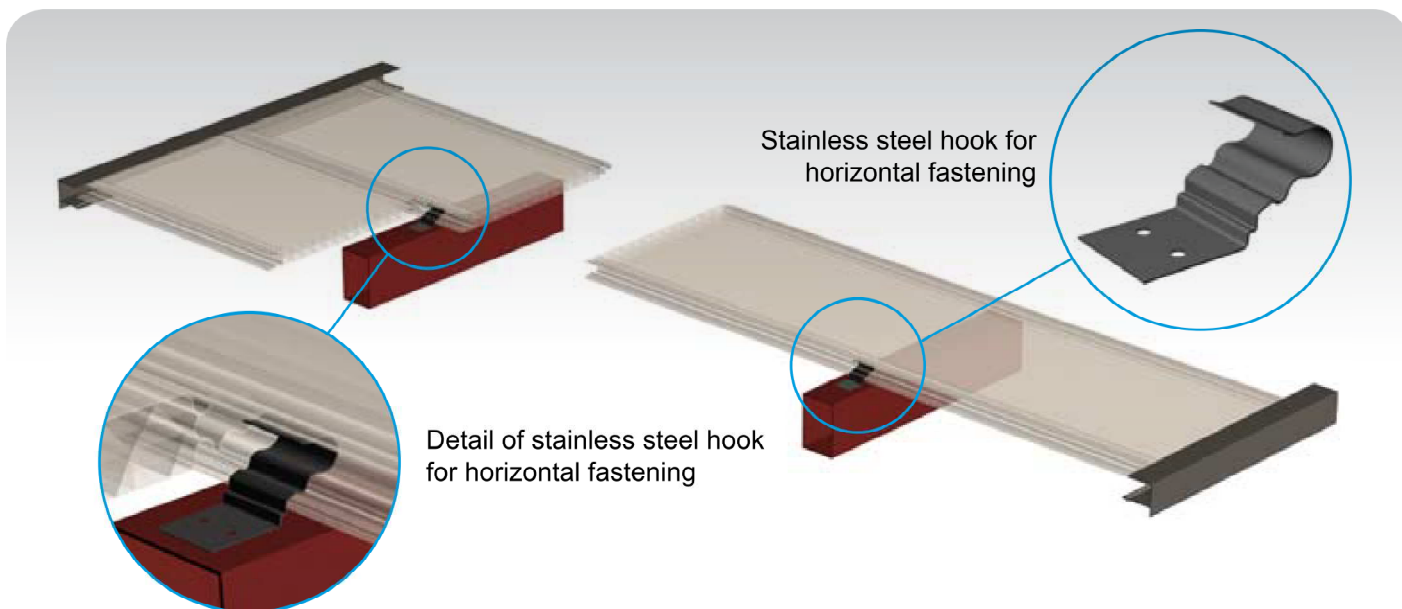
Perfectly watertight, light in weight and easily to install: these are the most commonly needed characteristics of a roofing. The panel SepLux 40 5PX is the ideal product for this type of construction as no special preparation such as drilling, cutting or sealing is required.

When SepLux 40 5PX is used for roofs, a slope of at least 12% is recommended. The panels are fastened down by special stainless steel hooks at positions corresponding to the longitudinal supports. The positions and the number of hooks depend on the characteristics of the supporting structure and on the design and architectural requirements. We suggest the panels be fastened down using the stainless steel hooks at every available support.

ATTENTION: The differing load bearing capacities, for the same span, between vertical and roofing applications are given by the need to considering, in this latter case, as well as wind load, also dead weight, incidental (snow) loads and depression loads.

ATTENTION: The “pitch” at which fastenings to the supporting structure must be made, may vary according to the total height of the application, but must not exceed 150 cm.



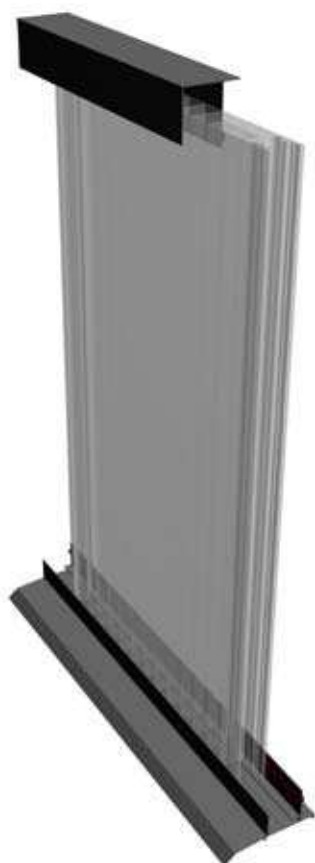


SEPLUX 40 5PX VERTICAL



The patented watertight tongue-and groove-joint confers unique qualities to the SepLux 40 5PX panel. This is the ideal panel for the most special applications and for walling of medium and large dimensions.

The typical cellular structure offers high load resistance as well as excellent light transmission. Guarantee 10 years with UV-protection.



UP TO CM 250



Thanks to the patented panel edge joint we can use free span SepLux 40 5PX panels of height up to 250 cm without supporting structures while guaranteeing a perfect watertight joint and also load bearing characteristics of up to 100 kg/m² (as certified by the Istituto Giordano).

ATTENTION:

Drilling is a difficult operation that we suggest to avoid; creating through-holes in polycarbonate (whether hollow or slab) not only reduces the life of the material, but damages even more the quality of the installation itself.

ATTENTION:

We suggest the sealing of the multi-wall panel's edges with adhesive aluminium tape.

HIGHER THAN 250 CM

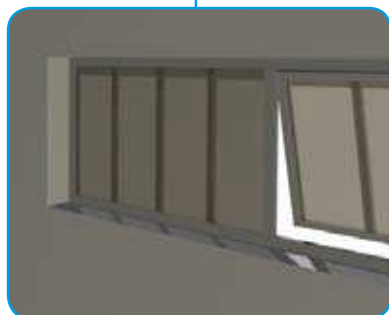
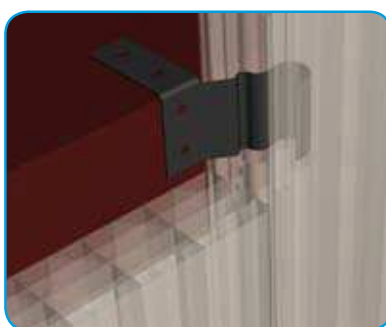
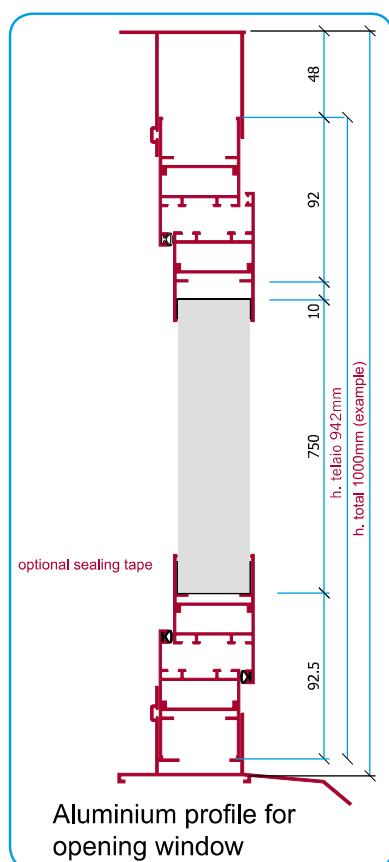


In these cases, SepLux 40 5PX panels are fastened to a wood or steel structure using a specific stainless steel hook that allows connection to the support structure without need to drill any through-holes in the panels; this guarantees:

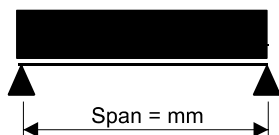
- Water tightness
- Free movement of the panels to allow expansion
- High resistance to pressure loads

The combined use of SepLux 40 5PX panels and the special stainless steel hooks allows construction of traditional as well as special installations, both under the dimensional and the architectural aspect, with no need to modify or alter the panels by any drilling, cutting or sealing that would compromise their technical characteristics.

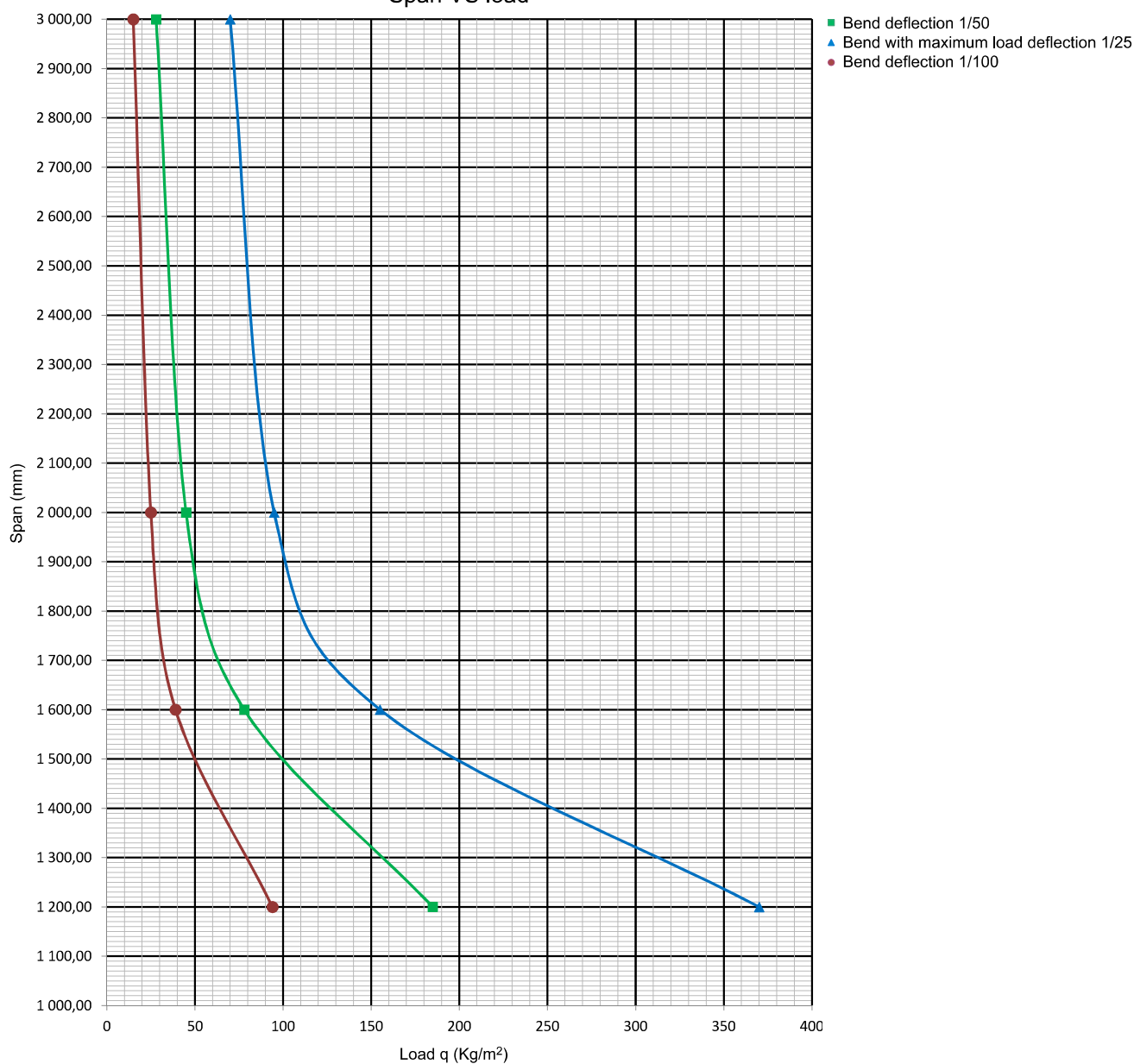
Detail of stainless steel hook for vertical fastening



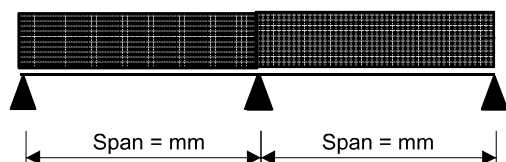
Analysis chart of Seplux 40 5PX panels load capacity (double support)



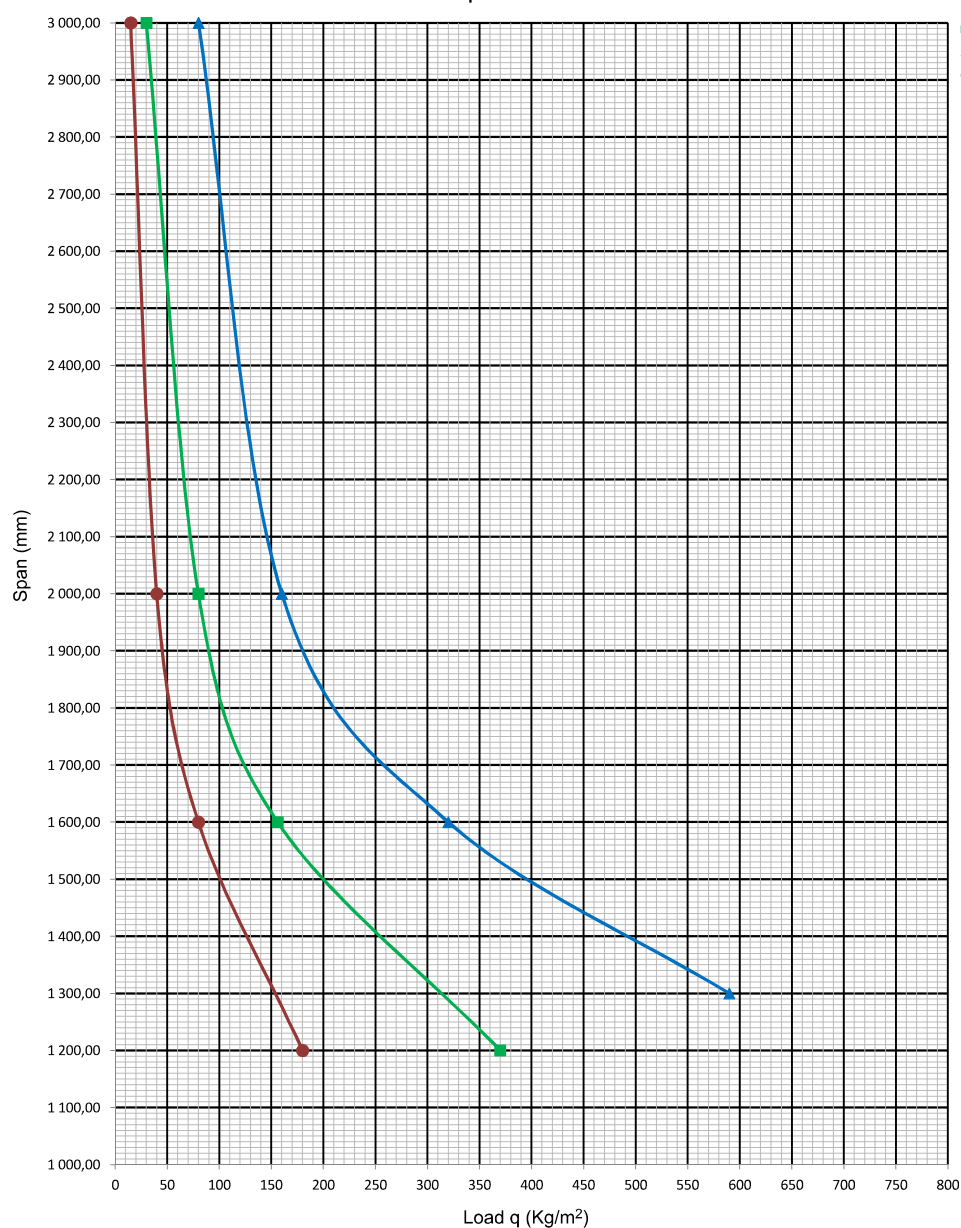
Span VS load



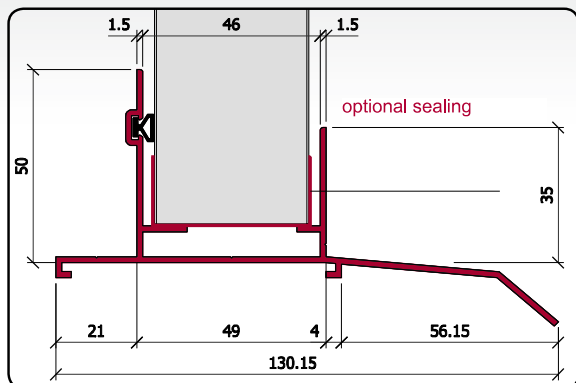
Analysis chart of Seplux 40 5PX panels load capacity (multiple support)



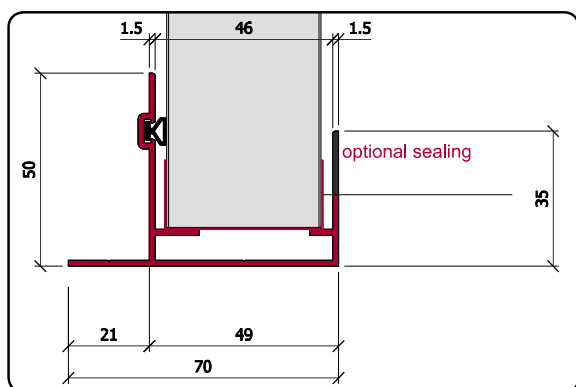
Span VS load



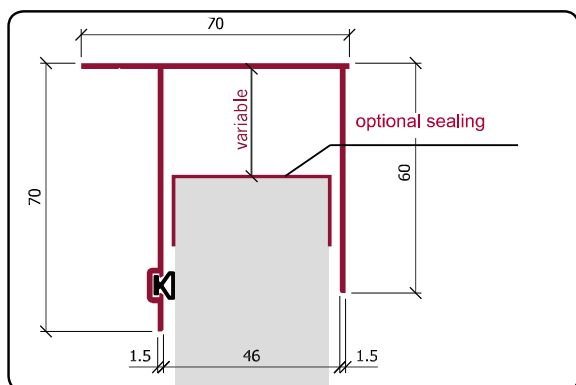
ALUMINIUM PROFILES SEPLUX 40 5PX



ALUMINIUM PROFILE
Lower, with drip stop.



ALUMINIUM PROFILE
Lower, without drip stop.



ALUMINIUM PROFILE
Upper and lateral.

SPECIFICATION



Modular panels for roofing, partitions or windows, width 435mm, in co-extruded multi-wall polycarbonate, UV protected on one side. Thickness 40mm,

coplanar, with patented watertight interlocking joint. U-Value = 1.2 W/(m² K) Self extinguishing Class B S1 d0.